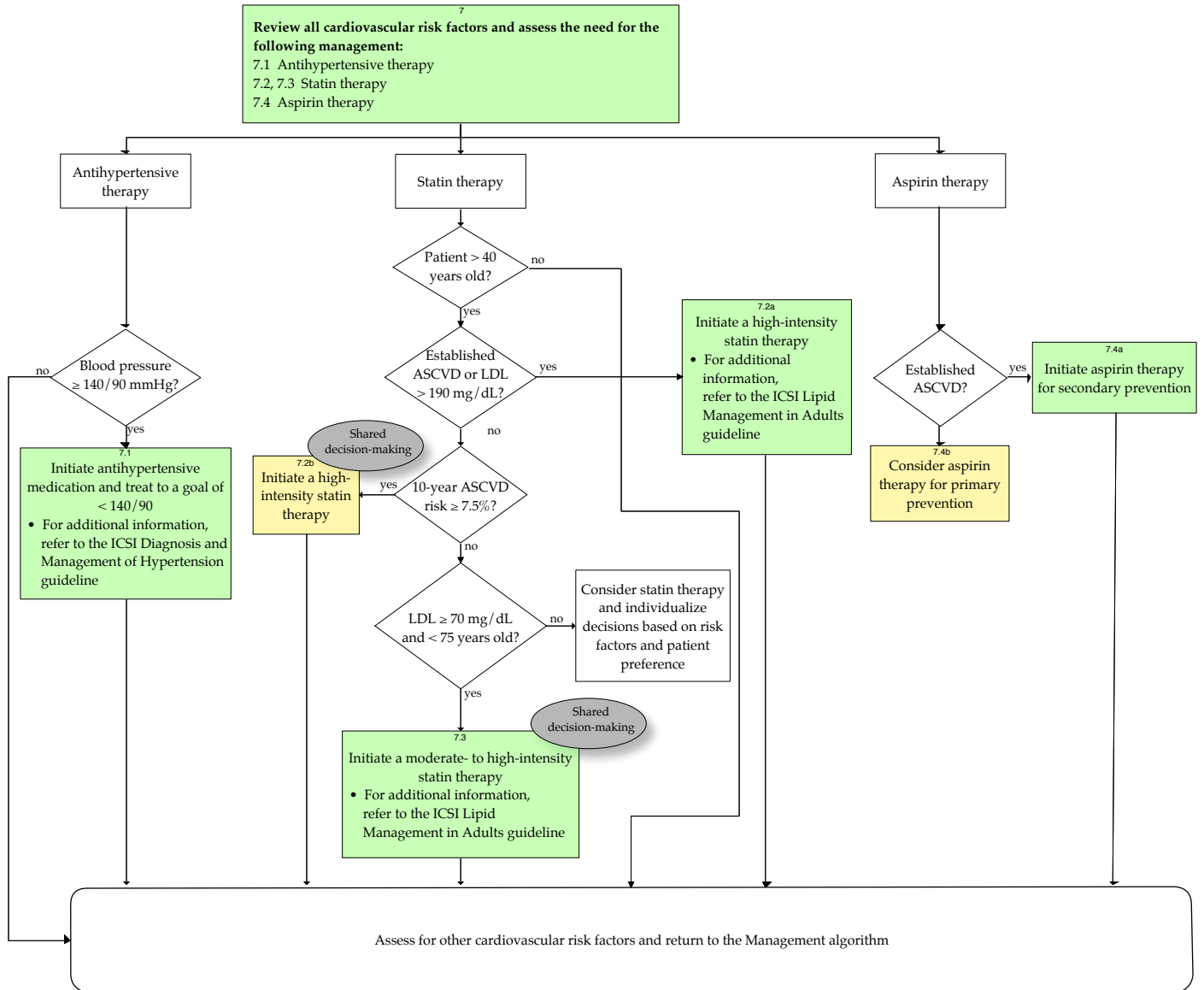


Cardiovascular Risk Management Algorithm



Shared decision-making (grey oval): Shared decision-making with a full discussion of the risks and benefits of treatment and consideration of patient values and preferences.

Green box: A recommendation has been made and **should** be utilized; the benefit outweighs the harms for most patients.

Yellow box: A recommendation has been made and **may** be utilized; the benefit is felt to potentially outweigh the harms for most patients.

Brown box: A recommendation against has been made; the harms outweigh the benefits for most patients.